



10 Park Crescent

Whitehall, Bristol, BS5 7AR

Asking price £525,000



3



1



2



C

10 Park Crescent



Description

Wake up to beautiful views over trees and down to the lake every day .. and offered with NO CHAIN !!

Rare to the market is this Victorian style home offering a spacious living arrangement. From the entrance hallway you enter, bay lounge, seperate dining room and a good size modern fitted kitchen /breakfast room to the ground floor.

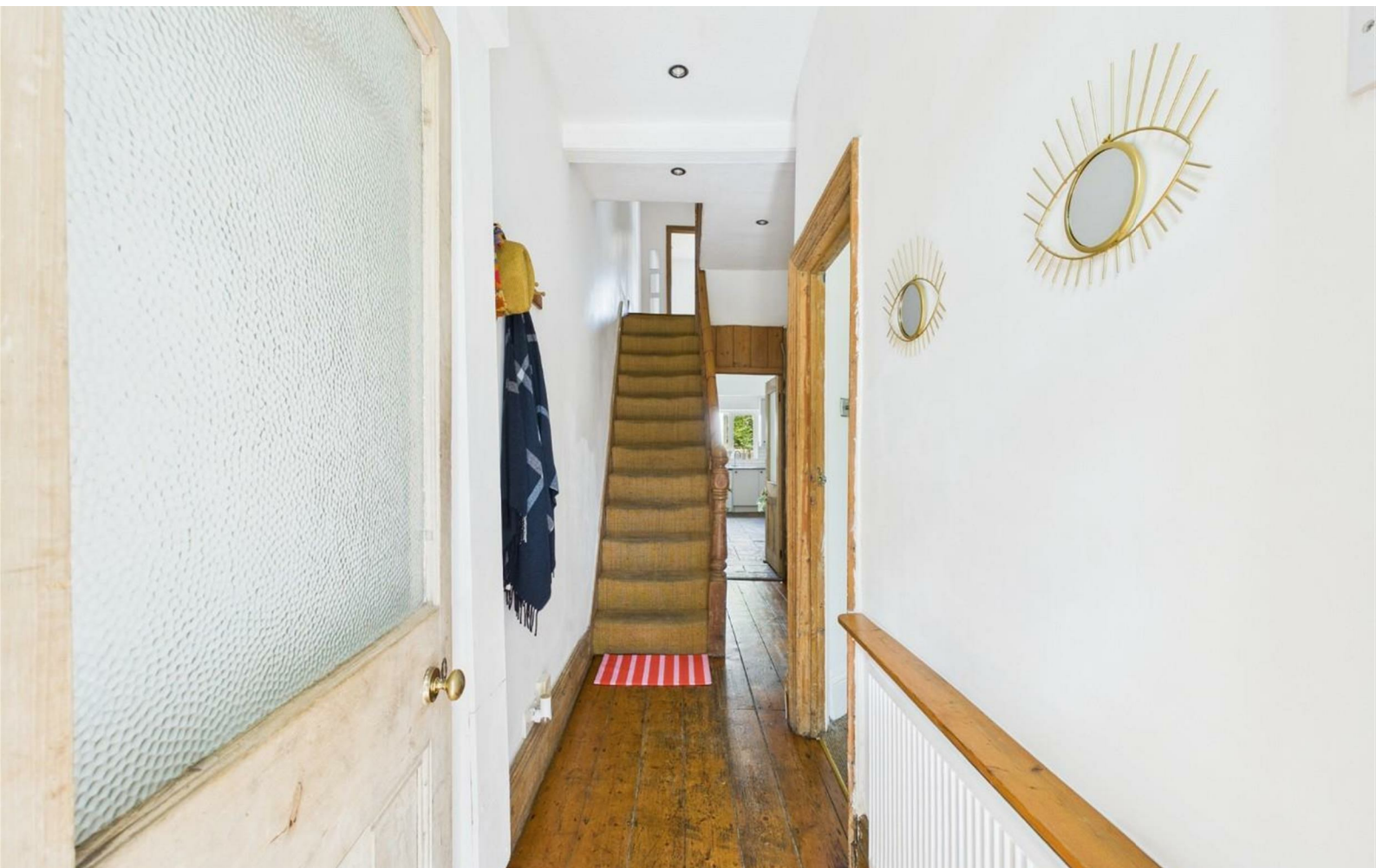
Upstairs you'll find three well proportioned double bedrooms (with park views from the bay windows of the master) and a modern bathroom suite with shower.

Outside to the rear is a patio enclosed garden with mature borders.

With retained and enhanced features such as stripped and varnished floors, period fireplaces, double glazing and gas central heating and much, much more.

- ** OVERLOOKING ST GEORGES PARK **
- 2 SEPERATE RECEPTION ROOMS
- UPSTAIRS BATHROOM
- RETAINED AND ENHANCED FEATURES
- VERY POPULAR LOCATION
- 3 BEDROOM VICTORIAN STYLE HOME
- MODERN KITCHEN / BEAKFAST ROOM
- DOUBLE GLAZED AND GAS CENTRALLY HEATED
- GREAT LOCATION CLOSE TO CHURCH ROADS POULAR CAFES,BARS AND SHOPS
- NO CHAIN !

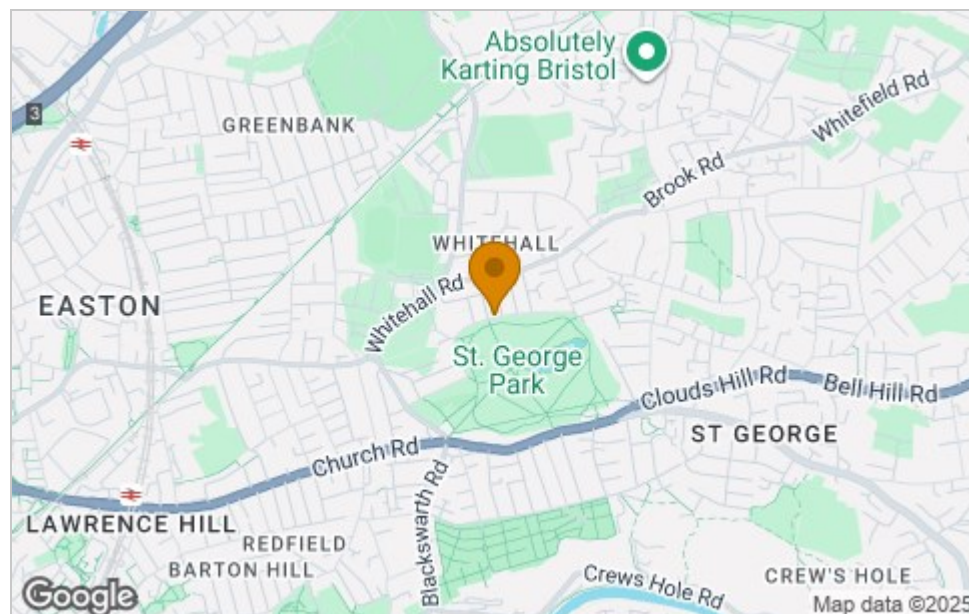




Floor Plan



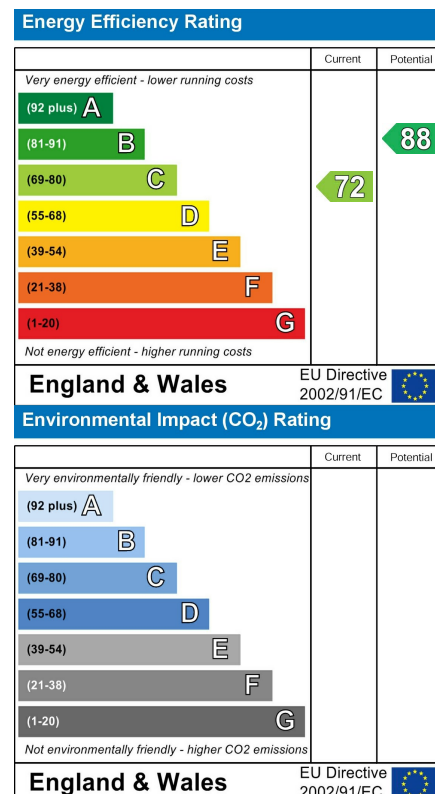
Area Map



Viewing

Please contact our House + Co Property (Sales) Office on 0117 907 0020 if you wish to arrange a viewing appointment for this property or require further information.

Energy Efficiency Graph



These particulars, whilst believed to be accurate are set out as a general outline only for guidance and do not constitute any part of an offer or contract. Intending purchasers should not rely on them as statements of representation of fact, but must satisfy themselves by inspection or otherwise as to their accuracy. No person in this firm's employment has the authority to make or give any representation or warranty in respect of the property.